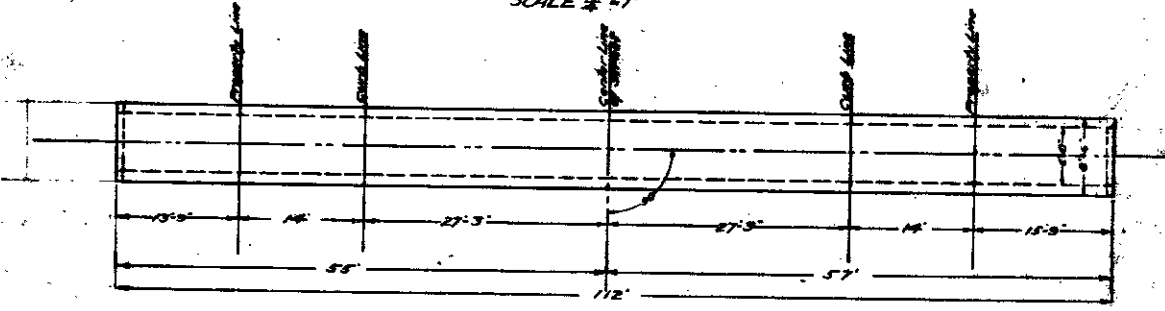
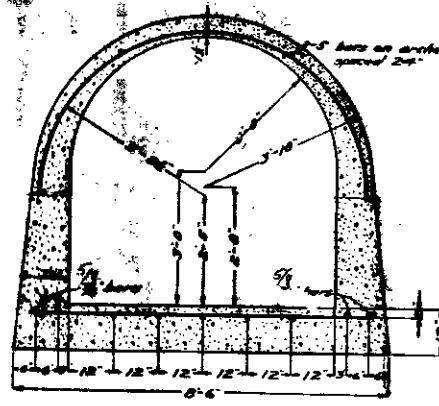


VERTICAL LONGITUDINAL SECTION  
SCALE 1/2"=1'



PLAN  
SCALE 1"=10'



CROSS SECTION  
SCALE 1/2"=1'

Note:-  
All reinforcing bars or rods  
will be # and will be spaced  
12" on centers unless otherwise  
marked or specified.

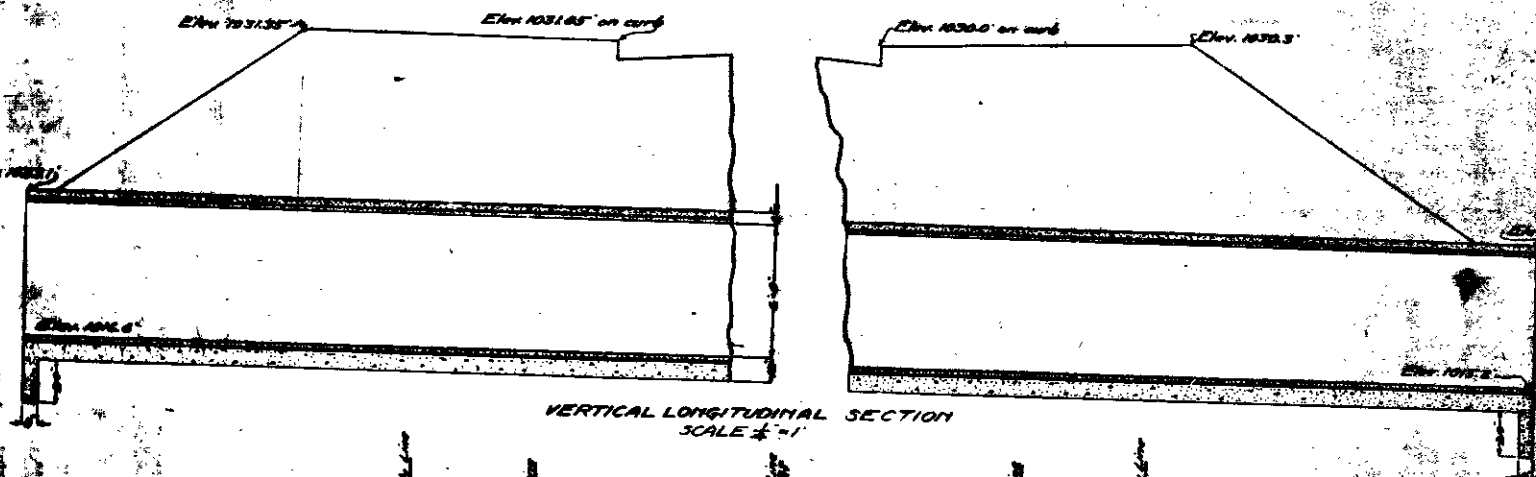
*Cut yds 89.6*

*F. A. Smith*

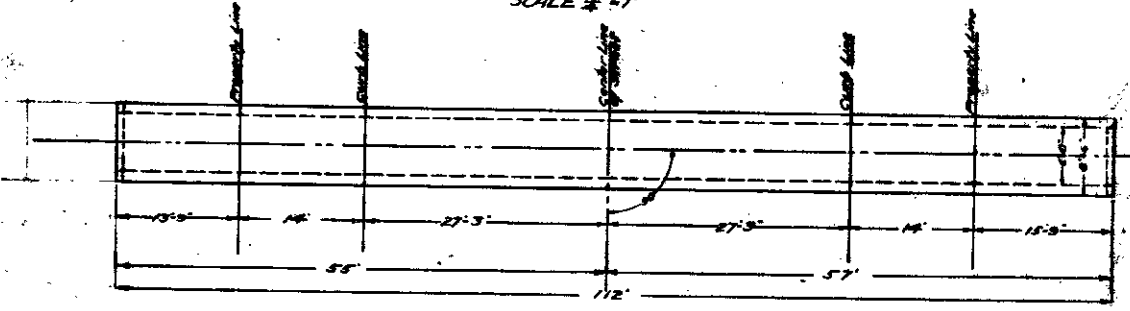
0827  
0827  
PLANS  
FOR  
SIX FOOT ARCH CULVERT  
AT  
FOURTH ST. & TOWN CREEK  
F. A. SMITH, CITY ENGINEER  
NOV. 25, 1913.

*92*  
*209*

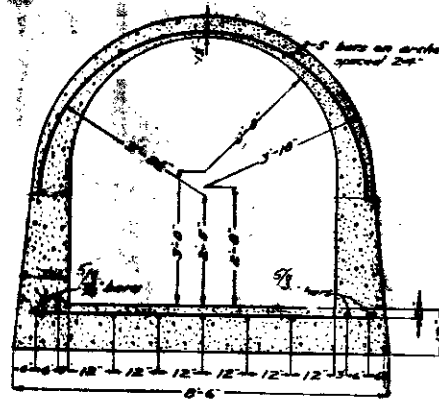
*Spencer S. Botsch*



VERTICAL LONGITUDINAL SECTION  
SCALE 1/2"=1'



PLAN  
SCALE 1"=10'



CROSS SECTION  
SCALE 1/2"=1'

Note:-  
All reinforcing bars or rods  
will be # and will be spaced  
12" on centers unless otherwise  
marked or specified.

*Cut yds 89.6*

*F. A. Smith*

0827  
0827  
PLANS  
FOR  
SIX FOOT ARCH CULVERT  
AT  
FOURTH ST. & TOWN CREEK  
F. A. SMITH, CITY ENGINEER  
NOV. 25, 1913.

*92*  
*209*